

# Product Information

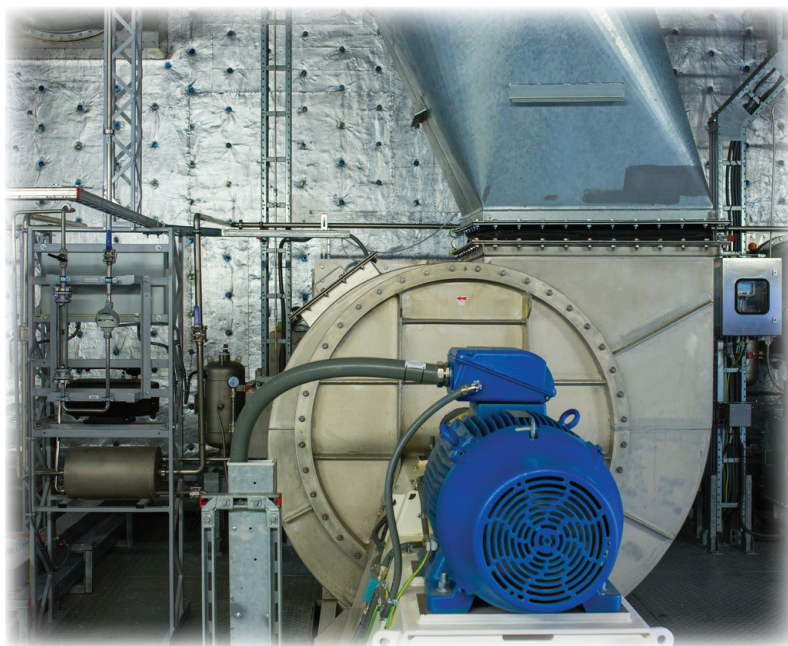


## Almasol® Syntemp Lubricant (9901)

### *Synthetic, Non-Melting Grease Protects Metal Surfaces*

LE's Almasol® Syntemp Lubricant is an extremely tacky, high-temperature, extreme pressure (EP) grease made from a very heavy synthetic fluid and non-melting thickener. It is specially formulated to provide exceptional protection at temperatures at which petroleum oils would completely oxidize. This grease has exceptional water resistance, remains unaffected by boiling water and steam, and contains inhibitors that prevent rust and corrosion.

Almasol Syntemp Lubricant is excellent for use in any application where an extremely high-temperature lubricant is required, including large open gears, large industrial gears, oven chains, sliding surfaces, and large or slow-moving bearings. It contains Almasol®, LE's exclusive solid wear-reducing additive.



### Beneficial Qualities

#### *Long Lasting & Heat Resistant*

- Lasts much longer under high temperatures than ordinary lubricants
- Will not melt, liquefy or run during use
- Has high oxidation resistance, preventing formation of varnish, gum or carbon deposits

#### *Water Resistant*

- Resists water contamination, including boiling water or steam
- Will not wash off easily

#### *Protective*

- Is very sticky and adheres to metal; will not drip or fling off
- Protects against rust and corrosion
- Has superior wear-reducing characteristics
- Exhibits excellent mechanical stability
- Cushions gear teeth when heavy or shock loads are encountered

### Proprietary Additive

LE's proprietary additives are used exclusively in LE lubricants. Almasol Syntemp Lubricant contains Almasol.

**Almasol®** solid wear-reducing additive is able to withstand extremely heavy loads, chemical attack and temperatures up to 1,900°F (1,038°C). It is attracted to metal surfaces, forming a microscopic layer but not building on itself or affecting clearances. Almasol minimizes metal-to-metal contact and the resulting friction, heat and wear.

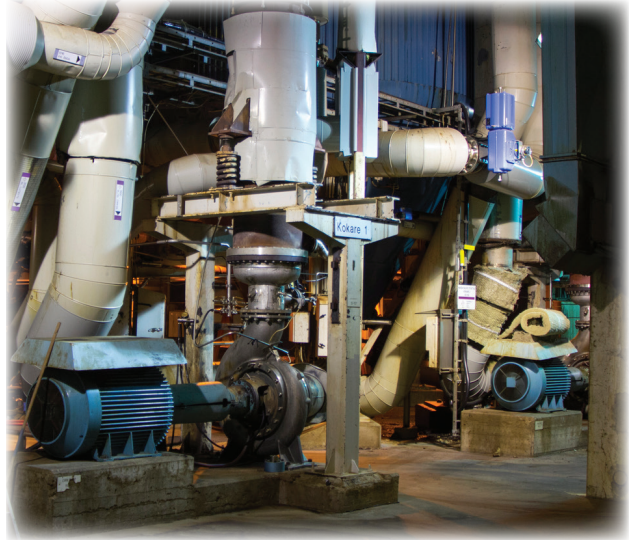




## Almasol® Syntemp Lubricant

### 9901

Thickener Type	Bentonite clay
Texture	Smooth w/tack
Color	Green
NLGI Grade	2
Worked 60 Penetration ASTM D217	280
Dropping Point °C (°F), ASTM D2265	Non-melt
<b>Base Fluid Characteristics</b>	
Flash Point °C (°F), ASTM D92	204 (400)
Viscosity @ 100°C, cSt, ASTM D445	210.0
Viscosity @ 40°C, cSt, ASTM D445	7,630
Pour Point °C (°F), ASTM D97	-6 (21)
Oxidation drop in psi @ 100 hrs, ASTM D942	3
Timken OK Load lbs, ASTM D2509	45



### Performance Requirements Met or Exceeded

- Diamond power soot blowers

### Typical Applications

- Large open gears, including kiln girth gears
- Oven chains, cables, chains, and sliding surfaces
- Large bearings, especially those operating in high-temperature environment
- Low-speed plain bearings

